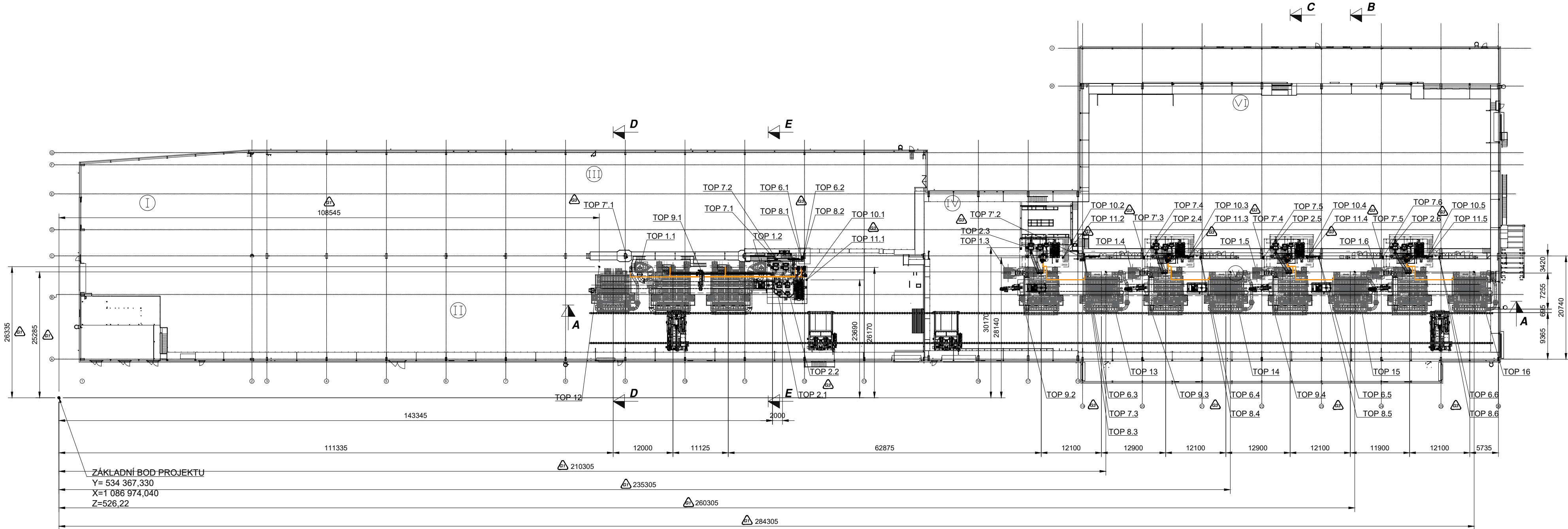


A
B
C
D
E
F
G
H

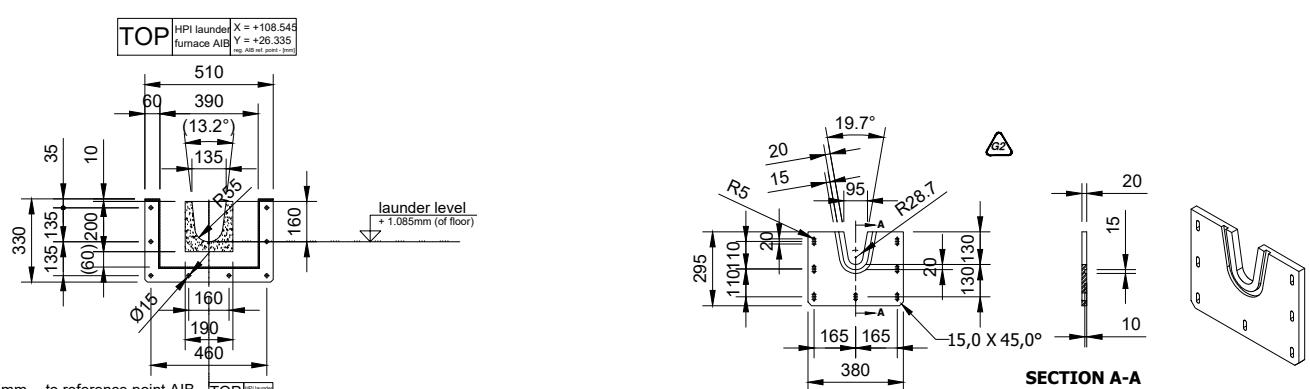
1 2 3 4 5 6 7 8

A
B
C
D
E
F
G
H



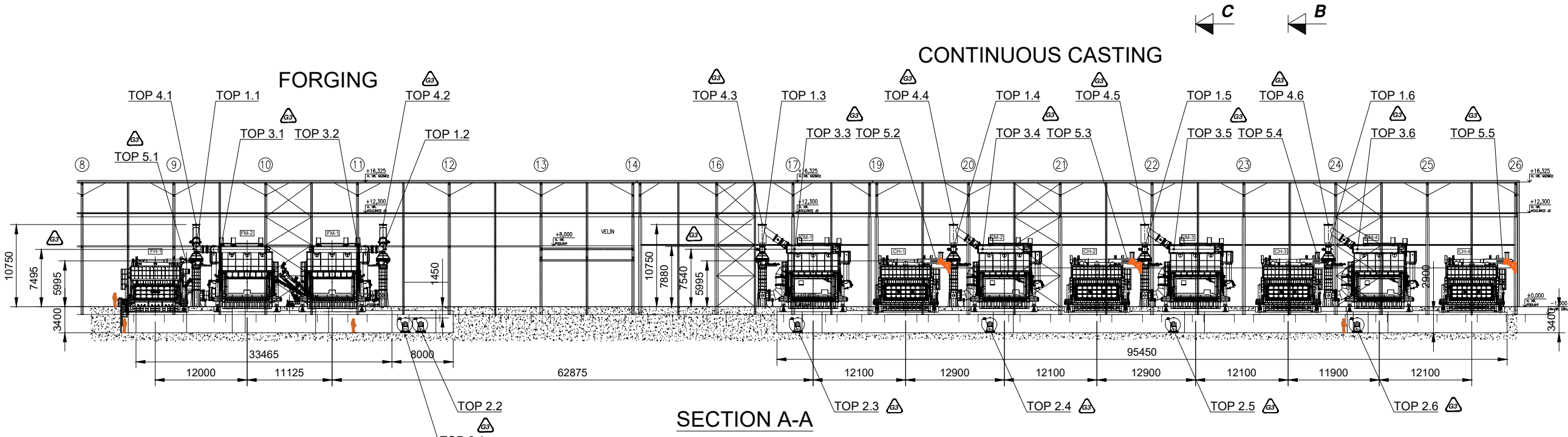
	X	Y	Z
TOP 1.1	119685	26205	7880
TOP 1.2	141110	26205	7880
TOP 1.3	190980	25065	7880
TOP 1.4	219680	25065	7880
TOP 1.5	240980	25065	7880
TOP 1.6	264880	25065	7880
TOP 2.1	143305	26170	-1450
TOP 2.2	143325	26170	-1450
TOP 2.3	194575	20170	-1450
TOP 2.4	219725	20170	-1450
TOP 2.5	243730	20170	-1450
TOP 2.6	267730	20170	-1450
TOP 3.1	119670	17220	7485
TOP 3.2	1224890	17220	7485
TOP 3.3	194485	17105	7540
TOP 3.4	219485	17105	7540
TOP 3.5	244485	17105	7540
TOP 3.6	268485	17105	7540
TOP 4.1	119685	26205	10750
TOP 4.2	141110	26205	10750
TOP 4.3	190985	25065	10750
TOP 4.4	215985	25065	10750
TOP 4.5	240985	25065	10750
TOP 4.6	264985	25065	10750
TOP 5.1	115380	17695	5965
TOP 5.2	213480	17755	5965
TOP 5.3	238480	17755	5965
TOP 5.4	263480	17755	5965
TOP 5.5	287480	17755	5965
TOP 6.1	146220	28240	5200
TOP 6.2	146470	28240	5200
TOP 6.3	205940	28740	7100
TOP 6.4	228940	28240	7100
TOP 6.5	253130	28240	7100
TOP 6.6	277310	28240	7100
TOP 7.1	143670	27740	5200
TOP 7.2	144220	27740	5200
TOP 7.3	205940	28240	7100
TOP 7.4	217940	28240	7100
TOP 7.5	241940	28240	7100
TOP 7.6	265940	28240	7100
TOP 8.1	146220	27990	5200
TOP 8.2	146470	27990	5200
TOP 8.3	205940	27710	7100
TOP 8.4	229940	27990	7100
TOP 8.5	253130	27990	7100
TOP 8.6	277310	27990	7100
TOP 9.1	128430	24595	410
TOP 9.2	132780	22290	530
TOP 9.3	217780	22290	530
TOP 9.4	242780	22290	530
TOP 9.5	266780	22290	530
TOP 10.1	15215	23640	2000
TOP 10.2	20185	28140	2000
TOP 10.3	22685	28140	2000
TOP 10.4	250840	28140	2000
TOP 10.5	274840	28140	2000
TOP 11.1	15215	23640	2000
TOP 11.2	20185	28000	2000
TOP 11.3	22685	28000	2000
TOP 11.4	250840	28000	2000
TOP 11.5	274840	28000	2000

	X	Y	Z
TOP 1.1	120859.04	56572.33	8406.22
TOP 1.2	122804.04	56572.33	8406.22
TOP 1.3	127764.04	55943.33	8406.22
TOP 1.4	130264.04	55943.33	8406.22
TOP 1.5	132764.04	55943.33	8406.22
TOP 1.6	135164.04	55943.33	8406.22
TOP 2.1	123079.04	56037.33	-923.78
TOP 2.2	123299.04	56037.33	-923.78
TOP 2.3	128150.04	55437.33	-923.78
TOP 2.4	130650.04	55437.33	-923.78
TOP 2.5	133070.04	56437.33	-923.78
TOP 2.6	135470.04	56437.33	-923.78
TOP 3.1	120844.04	55187.33	8021.22
TOP 3.2	122489.04	55187.33	8021.22
TOP 3.3	128145.04	55147.33	8066.22
TOP 3.4	130645.04	55147.33	8066.22
TOP 3.5	133145.04	55147.33	8066.22
TOP 3.6	135545.04	55147.33	8066.22
TOP 4.1	120859.04	55672.33	11276.22
TOP 4.2	122804.04	55672.33	11276.22
TOP 4.3	127769.04	55943.33	11276.22
TOP 4.4	130269.04	55943.33	11276.22
TOP 4.5	132769.04	55943.33	11276.22
TOP 4.6	135169.04	55943.33	11276.22
TOP 5.1	120234.04	55232.33	6521.22
TOP 5.2	130044.04	55212.33	6521.22
TOP 5.3	132544.04	55212.33	6521.22
TOP 5.4	135044.04	55212.33	6521.22
TOP 5.5	137444.04	55212.33	6521.22
TOP 6.1	126194.04	56207.33	5726.22
TOP 6.2	126444.04	56207.33	5726.22
TOP 6.3	132914.04	563107.33	7626.22
TOP 6.4	131614.04	56207.33	7626.22
TOP 6.5	134014.04	56207.33	7626.22
TOP 6.6	136424.04	56207.33	7626.22
TOP 7.1	120944.04	562107.33	5726.22
TOP 7.2	121194.04	562107.33	5726.22
TOP 7.3	126214.04	56207.33	7626.22
TOP 7.4	130414.04	56207.33	7626.22
TOP 7.5	132814.04	56207.33	7626.22
TOP 7.6	135214.04	56207.33	7626.22
TOP 8.1	126194.04	56207.33	5726.22
TOP 8.2	126444.04	56207.33	5726.22
TOP 8.3	132914.04	562107.33	7626.22
TOP 8.4	131614.04	56207.33	7626.22
TOP 8.5	134014.04	56207.33	7626.22
TOP 8.6	136424.04	56207.33	7626.22
TOP 9.1	121604.04	55862.33	586.22
TOP 9.2	127734.04	55947.33	1056.22
TOP 9.3	130734.04	55947.33	1056.22
TOP 9.4	132734.04	55947.33	1056.22
TOP 9.5	135734.04	55947.33	1056.22
TOP 10.1	123789.04	55807.33	2526.22
TOP 10.2	128859.04	56207.33	2526.22
TOP 10.3	131809.04	56207.33	2526.22
TOP 10.4	133814.04	56207.33	2526.22
TOP 10.5	136184.04	56207.33	2526.22
TOP 11.1	123789.04	55807.33	2526.22
TOP 11.2	128859.04	562457.33	2526.22
TOP 11.3	131809.04	562457.33	2526.22
TOP 11.4	133814.04	562457.33	2526.22
TOP 11.5	136184.04	562457.33	2526.22

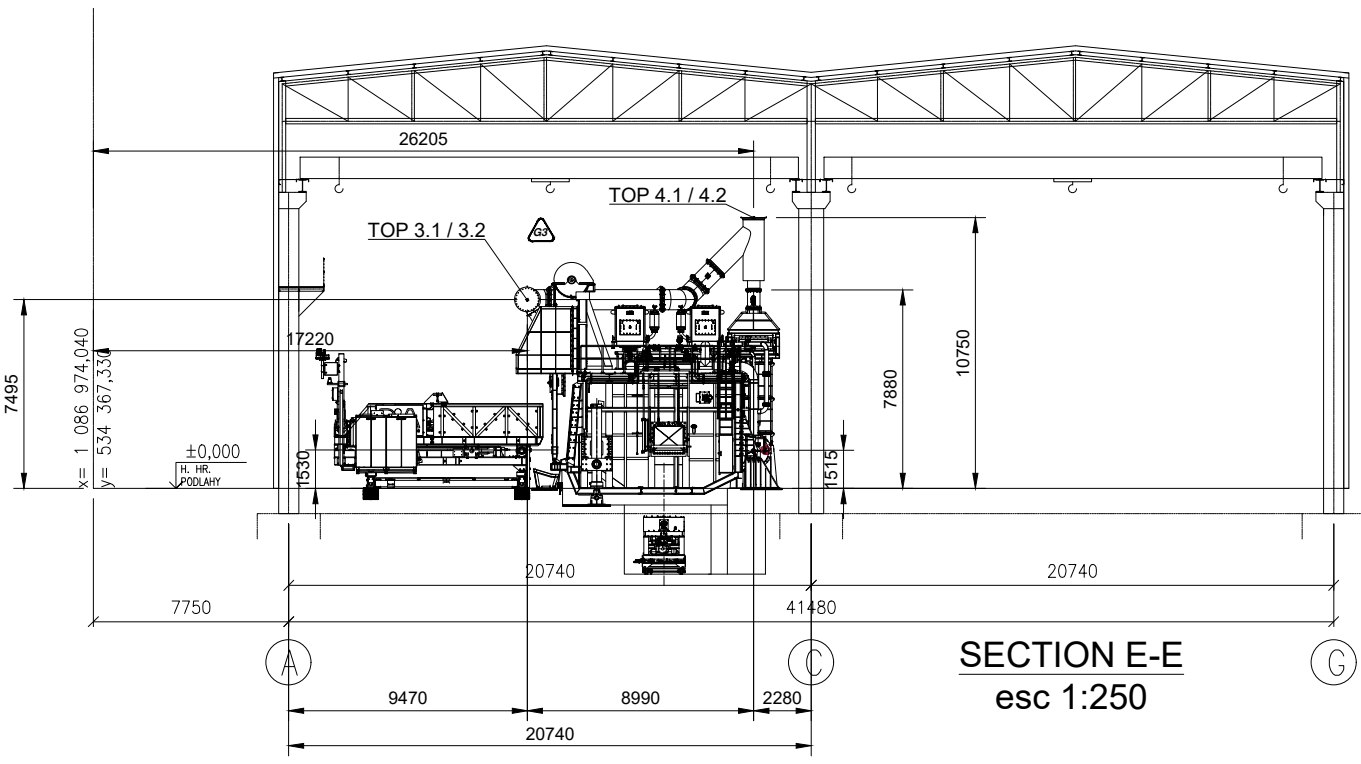


HPI launder // furnace AIB
esc. 1:25
TOP 12

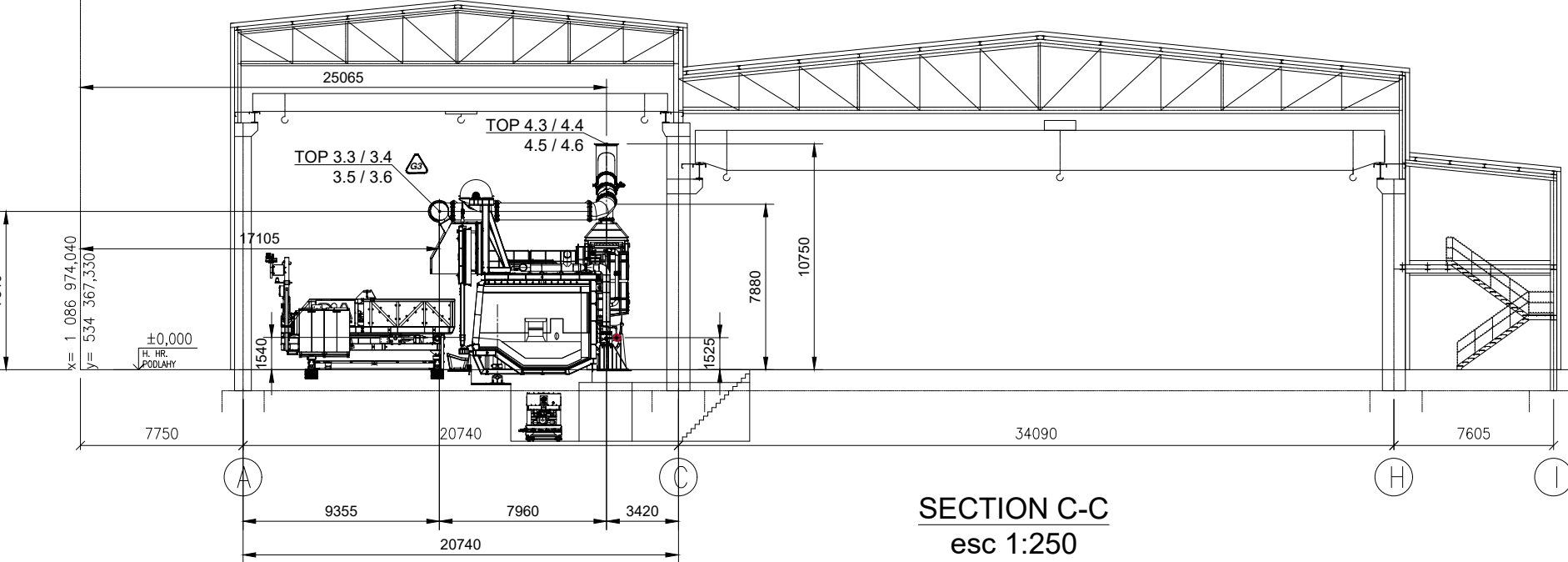
CASTING launder // furnace AIB
esc. 1:25
TOP 13-14-15-16



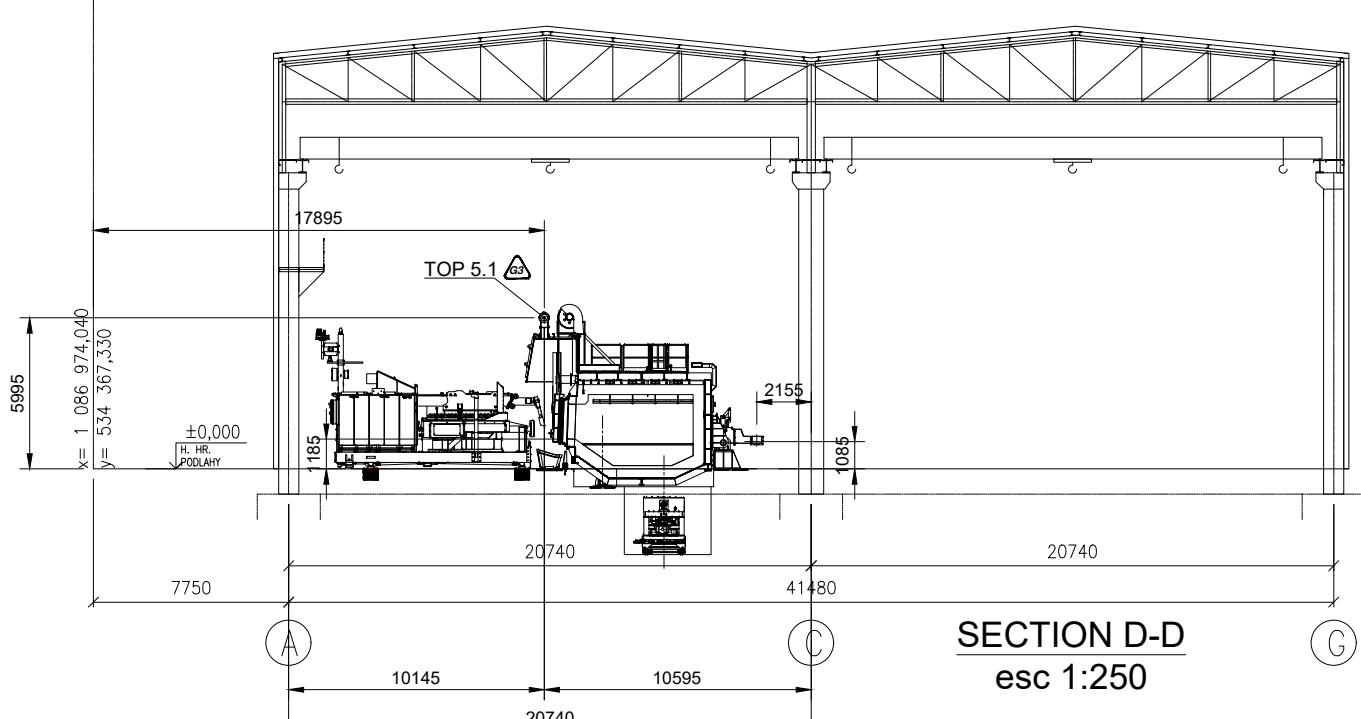
SECTION A-A



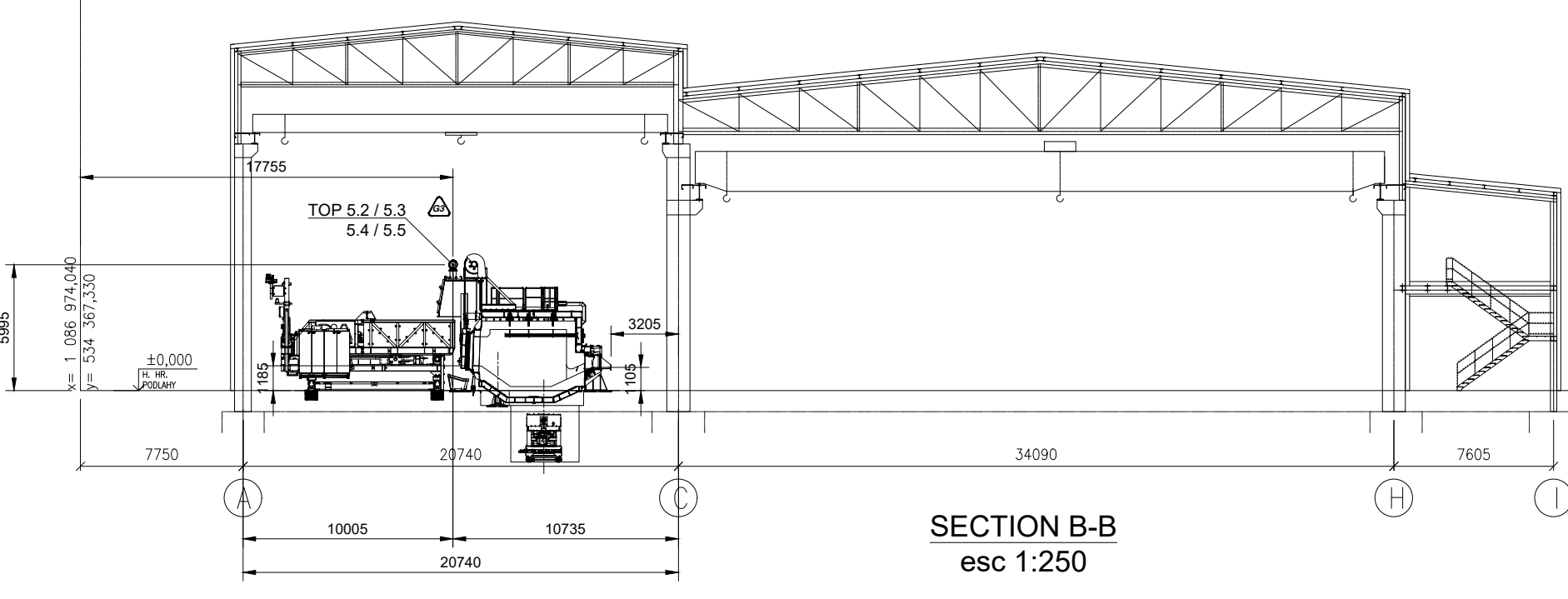
SECTION E-E
esc 1:250



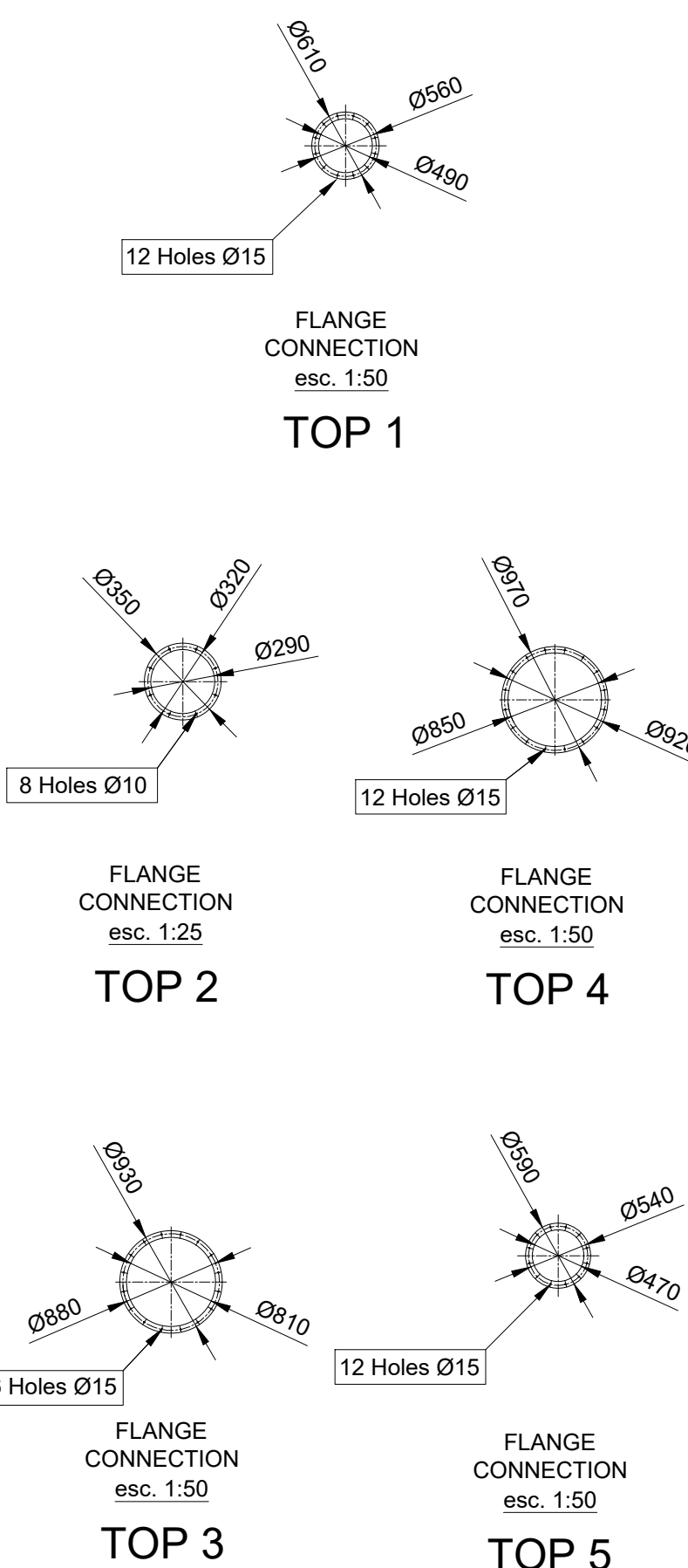
SECTION C-C
esc 1:250



SECTION D-D
esc 1:250



SECTION B-B
esc 1:250



TOP	Connection	Flow	Temperature	Pressure	Notes
TOP1	MELTCHAMBER	400mm	400mm	40°C	
TOP2	MELTCHAMBER	400mm	400mm	40°C	
TOP3	MELTCHAMBER	400mm	400mm	40°C	
TOP4	MELTCHAMBER	400mm	400mm	40°C	
TOP5	MELTCHAMBER	400mm	400mm	40°C	
TOP6	MELTCHAMBER	400mm	400mm	40°C	
TOP7	MELTCHAMBER	400mm	400mm	40°C	
TOP8	MELTCHAMBER	400mm	400mm	40°C	
TOP9	MELTCHAMBER	400mm	400mm	40°C	
TOP10	MELTCHAMBER	400mm	400mm	40°C	
TOP11	MELTCHAMBER	400mm	400mm	40°C	
TOP12	MELTCHAMBER	400mm	400mm	40°C	
TOP13	MELTCHAMBER	400mm	400mm	40°C	
TOP14	MELTCHAMBER	400mm	400mm	40°C	
TOP15	MELTCHAMBER	400mm	400mm	40°C	
TOP16	MELTCHAMBER	400mm	400mm	40°C	

LAUNDER CONNECTION	X(mm)	Y(mm)	Z(mm)
HO-1 (HOLDER 25)	120776.04	55947.33	161.22
HO-2 (HOLDER 25)	122776.04	55947.33	161.22
HO-3 (HOLDER 25)	124776.04	55947.33	161.22
HO-4 (HOLDER 25)	126776.04	55947.33	161.22

Rev.

Modification

11/11/25

YSJ

This drawing is property of INSERTEC. It can be only shared for the purposes of repair, modification, or component replacement provided that the third party is under a confidentiality agreement with ALINVEST. In other cases, it must not be copied or transferred to third parties in any way without written authorization.

Tolerances for dimensions without tol. according to ISO 2768-mK

More than	0.5	3	6	30	120	400	1000	2000
Less	3	6	30	120	400	1000	2000	4000

MachineTool	±0.1	±0.2	±0.3	±0.5	±0.8	±1.2	±2	
Welded	±0.5	±1	±1.5	±2	±3	±4	±6	

Customer

Format

1

Title

E2558 TOP'S

Scale

1:500

Part Number

2558-0000-GNL-G-TOP-0000

Revision

G

Customer Number

Sheet

1 of 1

ALINVEST

insertec

Furnaces & Refractories

Proj. Methode

Part Number

2558-0000-GNL-G-TOP-0000

Revision

G

Customer Number

Sheet

1 of 1